

Mini Project

.....	الاسم
.....	الرقم الأكاديمي



Two contour maps are attached:

The first map is assigned for students having academic numbers 0 – 60.

The second one is assigned for students having academic numbers > 60.

First Requirement:

- 1) Draw a complete planning for the irrigation and drainage networks?
- 2) Calculate all areas served?

Second Requirement:

From a mechanical analysis, it is found that the soil has a combination of 10% sand and 5% clay. Lift irrigation is followed. The area is cultivated as 20 % rice and 75 % cotton. The compensation ratio is 30 %.

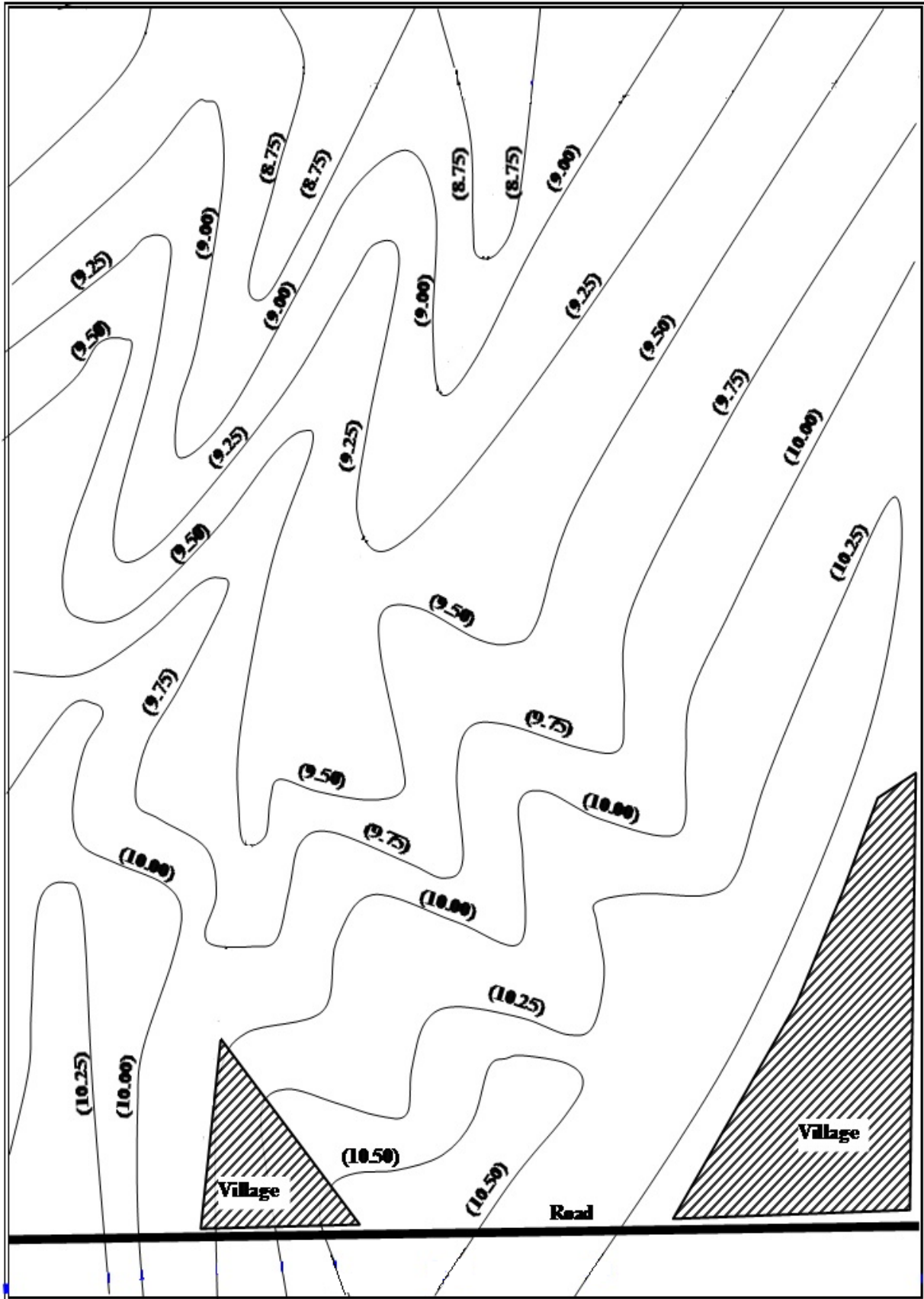
- 1) Draw a synoptic diagram for a branch canal and its distributor canals?
- 2) Calculate the area served for design at different sections of the branch canal?
- 3) Design one cross section using 2 different methods?
- 4) Draw the typical cross section?
- 5) Calculate the quantities of cut and fill?

Third Requirement:

The soil is located in Lower Egypt.

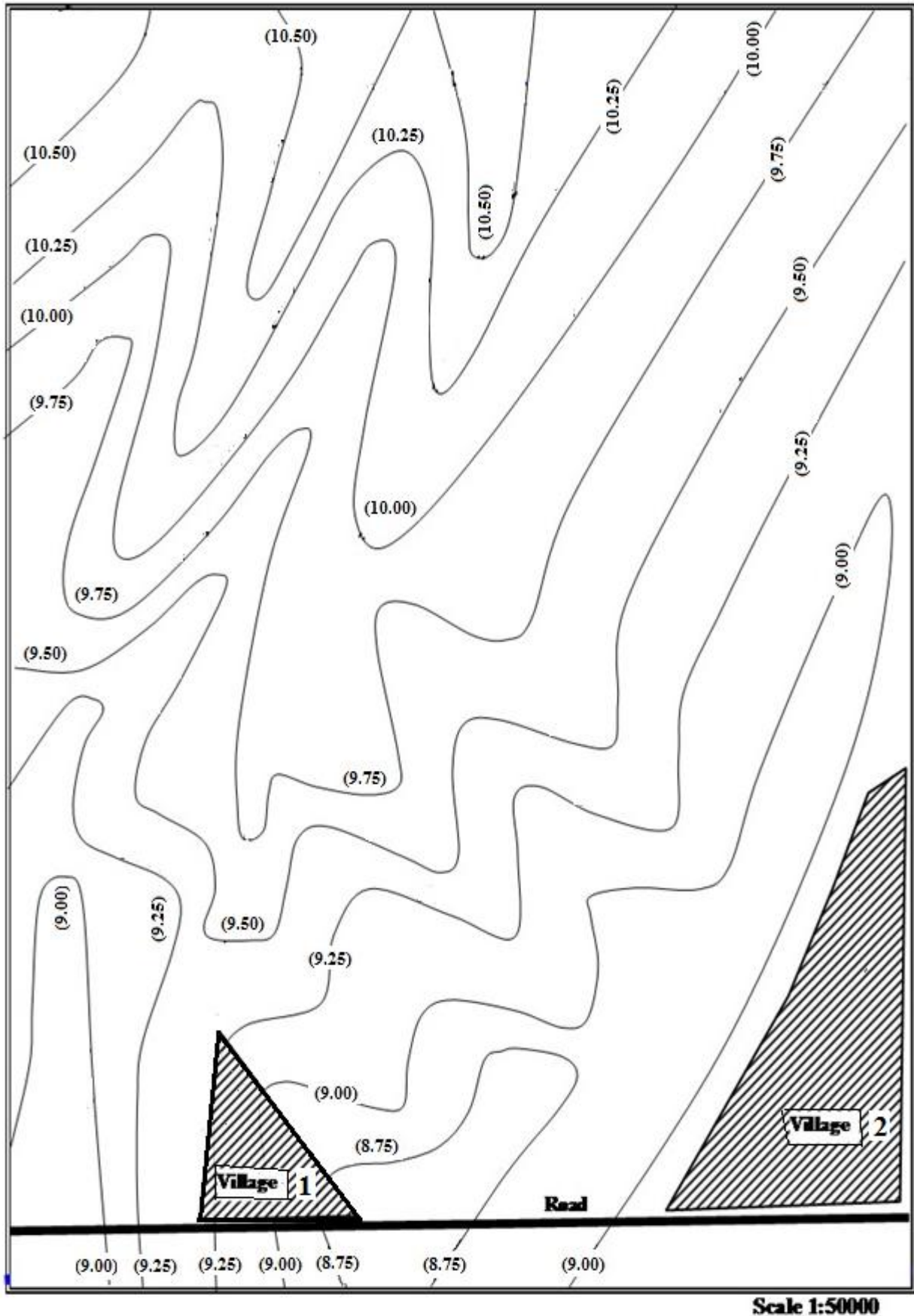
- 1) Draw a synoptic diagram for a branch drain and its minor drains?
- 2) Calculate the area served for design at different sections of the branch drain?
- 3) Design one cross section?
- 4) Draw the typical cross section?

The first contour map, for students having academic numbers 0 – 60.



Scale 1:50000

The second contour map, for students having academic numbers > 60.





Irrigation Constructions



Irrigation Channels



Flood Irrigation